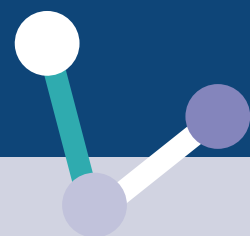


# PRU EVENTS PROGRAMME

WEDNESDAY 16 SEPTEMBER 2020

09.30	<b>Welcome/Introduction</b>
9.35 Presentation	ASCRU <b>Effect of body mass on future long-term care use</b> Olena Nizalova Senior Research Fellow, Personal Social Services Research Unit (PSSRU), University of Kent
9.50 Discussion	
10.00 Presentation	ASCRU <b>Projections of adult social care demand and expenditure 2018 to 2038</b> Raphael Wittenberg Deputy Director, Care Policy and Evaluation Centre (CPEC), LSE
10.15 Discussion	Ruth Hancock Professor of Economics of Health & Welfare, Norwich Medical School, University of East Anglia
10.25 Presentation	Joint OPFPRU/ASCRU <b>Projections of care needs for England under different disability scenario</b> Carol Jagger Professor of Epidemiology of Ageing, Population Health Sciences Institute, University of Newcastle
10.40 Discussion	Bo Hu Research Fellow, CPEC, LSE
10.50	Break
11.00 Presentation	ASCRU <b>Financial sustainability in the social care sector – impact of the COVID-19 pandemic</b> Jose-Luis Fernandez Director and Associate Professorial Research Fellow, CPEC, LSE
11.15 Discussion	
11.25 Presentation	EEPRU <b>Does public social care expenditure improve care-related quality of life in England?</b> Francesco Longo Research Fellow, Centre for Health Economics, University of York
11.40 Discussion	
11.50 Presentation	EEPRU <b>Developing an outcome measure for use in economic evaluation spanning health and social care</b> John Brazier Professor of Health Economics and Dean, School of Health and Related Research (ScHARR), University of Sheffield
12.05 Discussion	
12.15–12.20	<b>Closing Remarks</b>

# PRU EVENTS PROGRAMME



MONDAY 21 SEPTEMBER 2020

14.00	<b>Welcome/Introduction</b>
14.05 Presentation	PIRU <b>Policy Innovation and Evaluation Unit study of attitudes to paying for social care</b> Raphael Wittenberg Deputy Director, CPEC, LSE
14.20 Discussion	
14.30 Presentation	ASCRU <b>Thinking about caring for older relatives in the future</b> Madeleine Stevens Assistant Professorial Research Fellow, CPEC, LSE
14.45 Discussion	
14.55 Presentation	ASCRU <b>Patterns of unpaid care for older people: Health Survey for England analyses</b> Amritpal Rehill Research Officer, CPEC, LSE
15.10 Discussion	
15.20	Break
15.30 Presentation	HSCWRU <b>Social care personal assistants in England</b> Jill Manthorpe Professor of Social Work and Director of HSCWRU, Kings College London
15.45 Discussion	
15.55 Presentation	Exeter PRP Evidence Review Facility <b>Strategies for fostering a strengths-based approach within adult social work: systematic review of effectiveness and implementation studies</b> Rob Anderson Professor of Health Services and Implementation Research, Institute of Health Research, University of Exeter
16.10 Discussion	
16.20 Presentation	ASCRU <b>Taking a strengths-based approach to social work and social care</b> James Caiels PSSRU, University of Kent
16.35 Discussion	
16.45–16.50	<b>Closing Remarks</b>

REGISTER

<https://nihrascrusep2020.eventbrite.co.uk>